

P.O. Box 81226,  
Seattle, WA 98108  
(206) 266-1000

Symbol AMZN  
Exchange NASD  
Prev Close \$16.350

March 9,  
2002

## Report Highlights

Wall Street evaluates the Large Internet Retailers as being among the least attractive groups in the Technology sector.

Analysts consensus rating for the stock of Amazon.Com as a "Hold".

Income for the Large Internet Retailers in 2002, based on current estimates, are expected to fall below the rate of growth anticipated for the broad market.

Analysts forecast losses for Amazon.Com will decline from 2001's loss of \$1.53 per share to a loss of \$0.19 in 2002.

## Inside...

Overview	1	Financial Highlights by Quarter	
Price History		Revenues	10
Relative Price Performance	2	Profit Margin	10
52-Week Price History	2	Net Income	10
Industry Group Summary		Earnings Per Share	10
Key Statistics Comparison	3	Income Statement Analysis	
Group Profit Forecast	3	10-Year Income Statement	11
Investment Attractiveness		Ratio Analysis	11
Sector	4	Trend Charts	11
Group	4	Cash Flow Analysis	
Company	4	10-Year Operating Activities	12
Twelve Month Overview	5	Ratio Analysis	12
Bulls and Bears	5	Trend Charts	12
Wall Street Earnings Estimates		Balance Sheet Analysis	
Group	6	10-Year History	13
Increases and Decreases	6	Ratio Analysis	13
Company	7	Trend Charts	13
Quarterly Earnings History	7		
Contributing Analysts—Annual	8	A glossary of terms and abbreviations used	
Estimates by Recommendation	8	in this report is available at	
Contributing Analysts—Quarterly	9	<a href="http://www.multex.com/mdg/glossary99.htm">http://www.multex.com/mdg/glossary99.htm</a>	

**PROFESSIONAL**

**INVESTMENT REVIEW**

## Description

Amazon.com, Inc. is a Website where customers can find and discover anything they may want to buy online. The Company lists millions of unique items in categories such as books, music, DVDs, videos, consumer electronics, toys, camera and photo items, software, computer and video games, tools and hardware, lawn and patio items, kitchen products, and wireless products. Through its Amazon Marketplace, Auctions and zShops services, any business or individual can sell virtually anything to the Company's approximately 30 million cumulative customers, and with Amazon.com Payments, sellers can accept credit card transactions. In addition to its U.S.-based Website, www.amazon.com, the Company operates four internationally focused Websites: www.amazon.co.uk, www.amazon.de, www.amazon.fr and www.amazon.co.jp. The Company also operates the Internet Movie Database (www.imdb.com), a comprehensive and authoritative source of information on movies and entertainment titles, and cast and crewmembers.

## Analysts' Consensus Opinions

	<u># of Ratings</u>	<u>% of Total</u>	<u>1 Mo. Prior</u>	<u>3 Mo. Prior</u>
Buy	0	0	0	0
Buy/Hold	9	47	10	8
Hold	7	36	6	7
Weak Hold	0	0	0	0
Sell	0	0	0	2
No Opinion	3	15	3	2
	19	100	19	19

## Firms Offering Coverage

ABN AMRO Incorporated  
 Bear Stearns & Co. Inc.  
 CIBC World Markets  
 Credit Suisse First Boston  
 Deutsche Banc Alex. Brown  
 Enskilda Securities  
 Goldman Sachs Research  
 J.P. Morgan Securities  
 Legg Mason Wood Walker, Inc.  
 Lehman Brothers Equity  
 Merrill Lynch  
 Morgan Stanley  
 Prudential Securities-Equity  
 RBC Capital Markets (United  
 Robertson Stephens  
 Salomon Smith Barney  
 SoundView Technology  
 U.S. Bancorp Piper Jaffray  
 Wells Fargo Securities, LLC  
 WR Hambrecht + Co.

## Consensus Earnings Forecast (03/09/02)

### Multex Consensus Estimates

	FY2001	2002	2003
Earnings Per Share (\$)	-1.53A	-0.19	0.00
Price-Earnings Ratio	NM	NM	N/A
Next Qtr (Mar) EPS (\$)	-0.63A	-0.09	-0.05

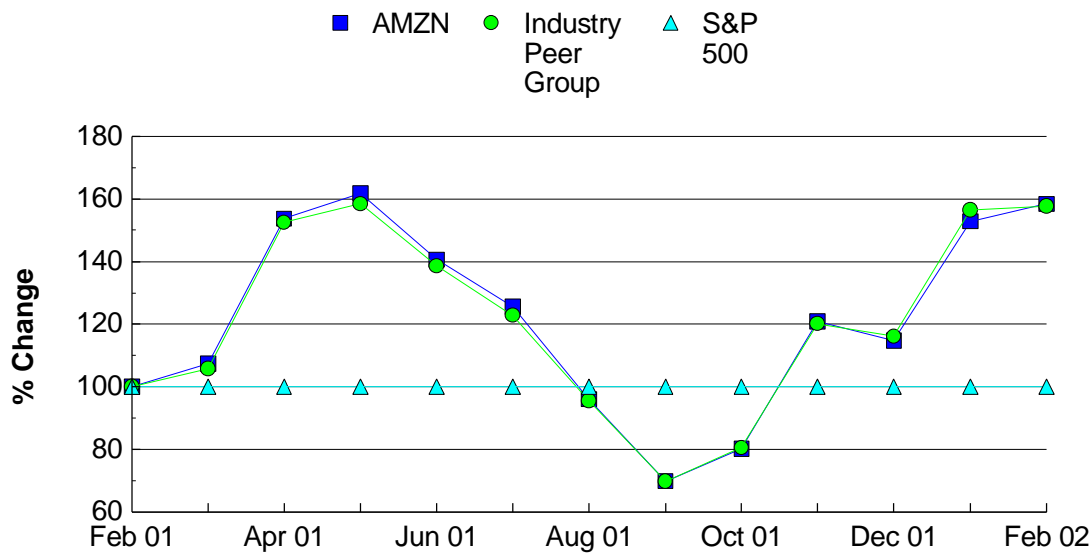
Actual EPS is "as reported" and may reflect one-time charges  
 FISCAL YEAR ENDS December 31  
 NM = Calculated Value is Not Meaningful

## Peer Group Companies

AMZN Amazon.com, Inc.  
 BNBN barnesandnoble.com

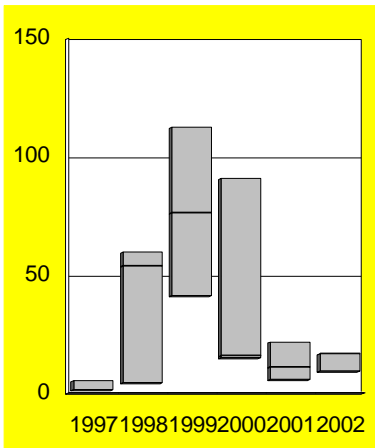
## Twelve Month Relative Performance

Amazon.Com's shares during the last year have provided a most exceptional 59.82% return for investors. With this outstanding return the stock has furnished a better performance than either the S&P 500 index or the Large Internet Retailers peer group. During this time period, the S&P 500 market average declined 27.72% while the Large Internet Retailers group price average rose 36.48%. The reckoning of this activity was a return from the shares that is 8755 basis points higher than the market and 2334 basis points higher than the group average.

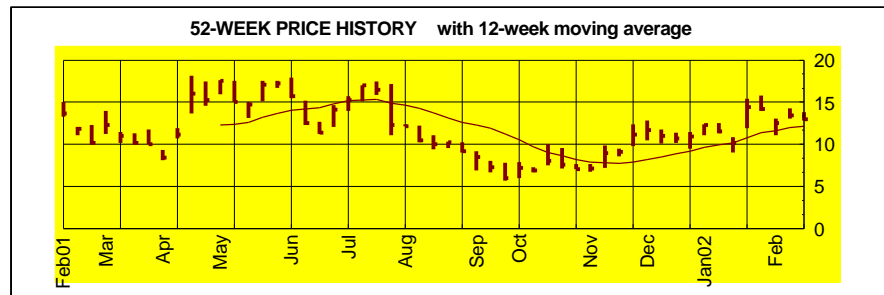


## Price History

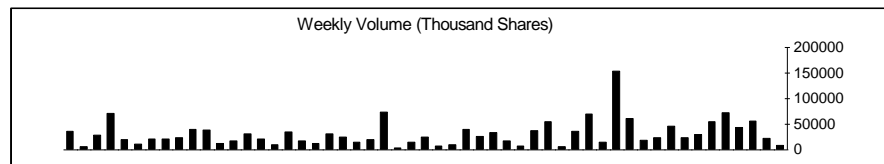
AMZN ANNUAL PRICE RANGES



52-WEEK PRICE HISTORY with 12-week moving average



Weekly Volume (Thousand Shares)



## Key Stock Statistics

	<u>Amazon.com, Inc.</u>	<u>Large Internet Retailers</u>	<u>S&amp;P 500</u>
Current P/E	NM	NM	
12 Month High P/E	NM	NM	
12 Month Low P/E	NM	NM	
Year End (Dec) P/E	NM	NM	
Current Price / 2001 Actual EPS	NM	NM	
Current Price / 2002 Est. EPS	NM	NM	
Current Price / 2003 Est. EPS	-	-	
Beta	3.49	2.91	
Common Shares Outstanding (000)	373,291	268,119	
Market Capitalization (000)	6,103,308	3,183,641	
Current Yield (%)	0.00	0.00	

NM = Calculated Value is Not Meaningful

## Group Outlook

Wall Street forecasts indicate losses for the group will grow in both 2002 and 2003. Earnings of the S&P 500 are expected to decline approximately 100.00% in 2002. At this time there is no S&P 500 estimate for the year 2003. The Large Internet Retailers have seen no earnings growth (The growth rate is equal to "0" percent) in the last three years. Wall Street forecasts indicate losses for the group will grow in both 2002 and 2003. Earnings of the S&P 500 are expected to decline approximately 100.00% in 2002. At this time there is no S&P 500 estimate for the year 2003.

<u>Company Name</u>	<u>Year</u>	<u>Cur Yr Est.</u>	<u>Nxt Yr Est.</u>	<u>Cur Yr Profit</u>	<u>% of Group</u>	<u>Next Yr Profit</u>	<u>% of Group</u>
Amazon.com, Inc.	2002	-0.19	0.00	-\$71.149	43.38	\$0.000	0.00
barnesandnoble.com	2002	-0.57	-	-\$92.879	56.62	-	-
TOTALS (\$Mil)				-\$164.028	100.00	\$0.000	100.00

**Sector: Technology**

The Sector text is not available for this ticker at the present time.

**Industry Group: Large Internet Retailers**

The Industry Group text is not available for this ticker at the present time.

**Company: Amazon.com, Inc.**

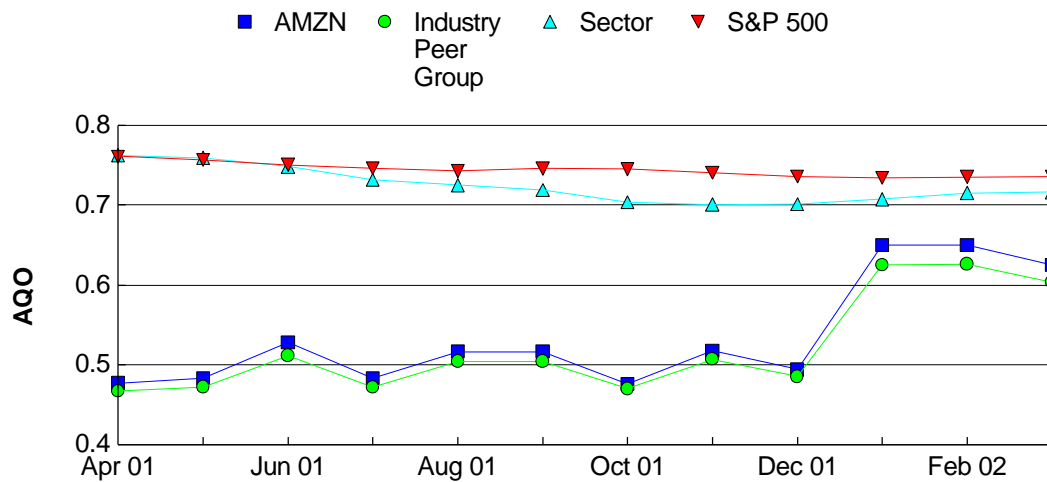
The Company text is not available for this ticker at the present time.

**Group Recommendation Summary**

Company	Cur AQO	#opn	B	BH	H	WH	S	NA	#chg	Mo-1 AQO	Mo-2 AQO	Mo-3 AQO
Amazon.com, Inc.	0.63	19	0	9	7	0	0	3	1	0.65	0.65	0.49
barnesandnoble.com	0.40	2	0	0	1	0	0	1	0	0.40	0.40	0.40
<b>Totals</b>	0.61	21	0	9	8	0	0	4	1	0.64	0.64	0.49

### Twelve Month Overview

The Overview is not available for AMZN at the present time.



### Peer Group Bulls and Bears

There is no Bullish Analysts coverage for companies in the AMZN peer group.

There is no Bearish Analysts coverage for companies in the AMZN peer group.

**Group: Large Internet Retailers**

The Wall Street Group Estimates text is not available for AMZN at the present time.

**Current Year Earnings Estimate Trends****Increases**

Company	Cur Year	Year	Previous	3 Months Ago	3 Month Change	Next Year	Previous	3 Months Ago	3 Month Change
There were no Increases for this period.									

**Decreases**

Company	Cur Year	Year	Previous	3 Months Ago	3 Month Change	Next Year	Previous	3 Months Ago	3 Month Change
There were no Decreases for this period.									

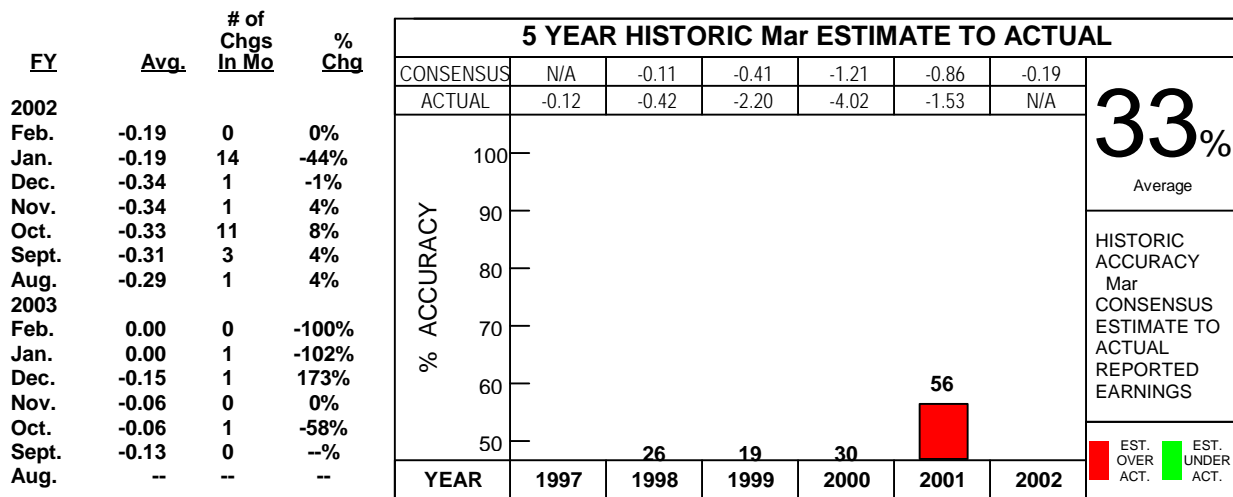
**No Net Change**

Company	Cur Year	Year	Previous	3 Months Ago	3 Month Change	Next Year	Previous	3 Months Ago	3 Month Change
Amazon.Com	02	-\$0.19	-\$0.19	-\$0.29	35.30%	\$0.00	\$0.00	\$-	-%
barnesandnoble.com	02	-\$0.57	-\$0.57	-\$0.60	5.00%	\$-	\$-	\$-	-%

**Company: Annual Estimates**

Company Annual Estimates text is not available for this ticker at the present time.

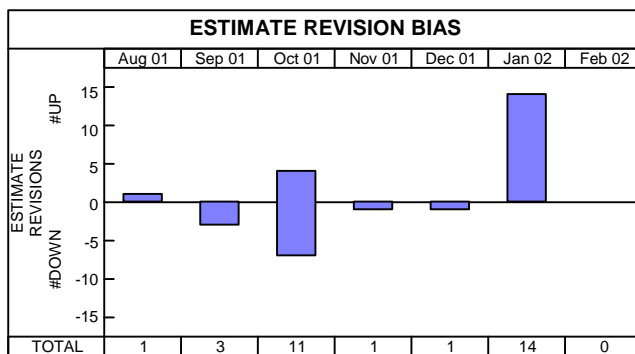
**Analysts' Annual Consensus Earnings Estimates**



Actual EPS is "as reported" and may reflect one-time charges

**Current Estimates**

**Quarterly Earnings History**



2002 Consensus Estimates	Q1	Q2	Q3	Q4
	-0.09	-0.10	-0.10	0.10
Prior Year	-0.63	-0.47	-0.46	0.01

**Company: Quarterly Estimates**

Company Quarterly Estimates text is not available for this ticker at the present time.



**CONTRIBUTING ANALYSTS**

FIRM	ANALYST	OPINION	Historical EPS			Earnings Per Share Estimates				
			12/2001		Est.	FY1 12/2002		FY2 12/2003		
			Actual	Est.		Est.	Confirm Date	Prior Est.	Est.	Confirm Date
ABN AMRO Incorporated	Han, Suk	BUY/HOLD	-1.53	n/a	-0.23	01/23/02	-0.42	n/a	n/a	n/a
Bear Stearns & Co. Inc.	Fielier/Tessin	BUY/HOLD	-1.53	-0.59	-0.13	01/23/02	-0.23	n/a	n/a	n/a
CIBC World Markets	Benedict, Peter	WATCHLIST	-1.53	n/a	n/a	n/a	n/a	n/a	n/a	n/a
Credit Suisse First Boston	Kiggen/Lee/Lazara	BUY/HOLD	-1.53	-0.61	-0.19	03/05/02	-0.17	n/a	n/a	n/a
Deutsche Banc Alex. Brown	Patel, Jeetil J	BUY/HOLD	-1.53	-0.57	-0.17	03/08/02	-0.34	n/a	n/a	n/a
Enskilda Securities	Herdland/Sprinchorn	NA	-1.53	n/a	-0.19	02/20/02	n/a	-0.02	02/20/02	n/a
J.P. Morgan Securities	Noglows, Paul	NA	-1.53	n/a	n/a	n/a	n/a	n/a	n/a	n/a
Legg Mason Wood Walker, Inc.	Gustafson, Holly	BUY/HOLD	-1.53	-0.61	-0.22	01/23/02	n/a	0.01	01/23/02	n/a
Lehman Brothers Equity	Becker, Holly	HOLD	-1.53	-0.60	-0.23	03/08/02	-0.33	n/a	n/a	n/a
Merrill Lynch	Baldauf, Justin	HOLD	-1.53	-0.60	-0.19	03/06/02	n/a	n/a	n/a	n/a
Morgan Stanley	Meeker/Mahaney,	BUY/HOLD	-1.53	-0.61	-0.20	03/06/02	-0.29	0.00	03/06/02	-0.16
Prudential Securities-Equity	Rowen/landwehr	HOLD	-1.53	n/a	-0.19	03/05/02	n/a	0.00	03/05/02	n/a
RBC Capital Markets (United	Sutton, George F.	HOLD	-1.53	-0.58	-0.19	03/06/02	-0.29	0.00	03/06/02	n/a
Robertson Stephens	Levitan, Lauren	HOLD	-1.53	-0.60	-0.24	01/23/02	-0.44	n/a	n/a	n/a
SoundView Technology	Milne, Shawn	HOLD	-1.53	-0.60	-0.23	01/23/02	n/a	0.10	01/23/02	n/a
U.S. Bancorp Piper Jaffray	Rashitchy/Meyers,	BUY/HOLD	-1.53	-0.57	-0.13	03/04/02	-0.23	0.07	03/04/02	n/a
Wells Fargo Securities, LLC	Rodgers, Allyson	HOLD	-1.53	-0.61	-0.20	01/23/02	n/a	-0.16	01/23/02	n/a
WR Hambrecht + Co.	Koerber/Lehr	BUY/HOLD	-1.53	-0.61	-0.12	03/06/02	-0.24	n/a	n/a	n/a
(Withheld by Request)	(Withheld by Request)	BUY/HOLD	-1.53	-0.62	-0.20	03/08/02	-0.36	n/a	n/a	n/a
(Withheld by Request)	(Withheld by Request)	NA	-1.53	-0.60	-0.18	03/06/02	-0.20	n/a	n/a	n/a

**Annual Estimate By Recommendation**

	Buy	Buy/Hold	Hold	N/A	Weak Hold	Sell
2002						
Wtd. Average	-	-0.18	-0.20	-0.18	-	-
Cons. Average	-	-0.18	-0.21	-0.19	-	-
2003						
Wtd. Average	-	0.01	0.00	-0.02	-	-
Cons. Average	-	0.03	-0.02	-0.02	-	-

Actual EPS is "as reported" and may reflect one-time charges

**CONTRIBUTING ANALYSTS**

FIRM	ANALYST	Historical Earnings Per Share								EPS Estimates		
		QTR 1 2001		QTR 2 2001		QTR 3 2001		QTR 4 2001		QTR 1 2002		
		Actual	Est.	Actual	Est.	Actual	Est.	Actual	Est.	Est.	Confirm Date	Prior Est.
ABN AMRO Incorporated	Han, Suk	-0.21	n/a	-0.16	n/a	-0.16	n/a	0.09	n/a	-0.10	01/23/02	-0.12
Bear Stearns & Co. Inc.	Fielier/Tessin	-0.21	n/a	-0.16	n/a	-0.16	n/a	0.09	-0.06	-0.08	01/23/02	-0.07
Credit Suisse First Boston	Kiggen/Lee/Lazara	-0.21	n/a	-0.16	-0.22	-0.16	n/a	0.09	-0.08	-0.09	03/05/02	-0.06
Deutsche Banc Alex. Brown	Patel, Jeetil J	-0.21	-0.22	-0.16	-0.21	-0.16	-0.27	0.09	-0.04	-0.09	03/08/02	-0.12
Legg Mason Wood Walker, Inc.	Gustafson, Holly	-0.21	n/a	-0.16	n/a	-0.16	n/a	0.09	n/a	-0.10	01/23/02	n/a
Lehman Brothers Equity	Becker, Holly	-0.21	n/a	-0.16	-0.21	-0.16	n/a	0.09	-0.07	-0.10	03/08/02	-0.12
Merrill Lynch	Baldauf, Justin	-0.21	n/a	-0.16	n/a	-0.16	n/a	0.09	n/a	-0.10	02/27/02	n/a
Morgan Stanley	Meeker/Mahaney,	-0.21	-0.22	-0.16	-0.21	-0.16	-0.21	0.09	-0.08	-0.09	03/06/02	-0.12
Prudential Securities-Equity	Rowen/landwehr	-0.21	n/a	-0.16	n/a	-0.16	n/a	0.09	n/a	-0.08	03/05/02	n/a
RBC Capital Markets (United)	Sutton, George F.	-0.21	-0.22	-0.16	-0.21	-0.16	n/a	0.09	-0.08	-0.10	03/06/02	n/a
Robertson Stephens	Levitan, Lauren	-0.21	-0.22	-0.16	-0.22	-0.16	n/a	0.09	-0.07	-0.12	01/23/02	n/a
SoundView Technology	Milne, Shawn	-0.21	-0.22	-0.16	-0.21	-0.16	-0.21	0.09	-0.07	-0.07	01/23/02	n/a
U.S. Bancorp Piper Jaffray	Rashichy/Meyers,	-0.21	n/a	-0.16	-0.21	-0.16	n/a	0.09	-0.04	-0.08	03/04/02	-0.10
Wells Fargo Securities, LLC	Rodgers, Allyson	-0.21	n/a	-0.16	-0.21	-0.16	n/a	0.09	-0.08	-0.10	01/23/02	n/a
WR Hambrecht + Co.	Koerber/Lehr	-0.21	n/a	-0.16	-0.21	-0.16	n/a	0.09	-0.08	-0.08	03/06/02	-0.10
(Withheld by Request)	(Withheld by Request)	-0.21	n/a	-0.16	-0.21	-0.16	n/a	0.09	-0.07	-0.07	03/06/02	-0.10
(Withheld by Request)	(Withheld by Request)	-0.21	n/a	-0.16	-0.20	-0.16	n/a	0.09	-0.08	-0.10	03/08/02	n/a

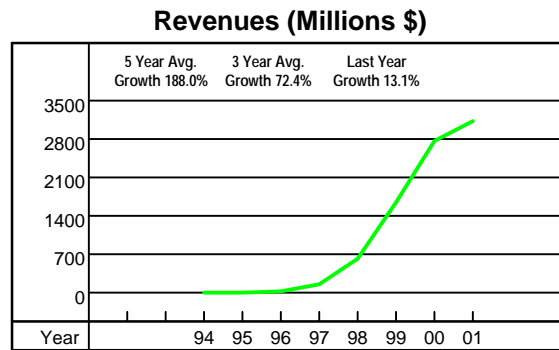
**Historical Quarterly Estimate Summary**

Quarter Ending Date	Actual	ACE	Above Actual	Below Actual	Exact	Deviation
SEP 1998	-0.08	-0.08	0	2	3	0.00
DEC 1998	-0.07	-0.07	1	2	0	0.02
MAR 1999	-0.12	-0.13	1	7	0	0.02
JUN 1999	-0.26	-0.25	4	0	2	0.01
SEP 1999	-0.26	-0.29	0	13	1	0.03
DEC 1999	-0.55	-0.48	16	0	0	0.07
MAR 2000	-0.35	-0.36	3	12	5	0.02
JUN 2000	-0.33	-0.35	3	22	2	0.03
SEP 2000	-0.25	-0.32	0	22	3	0.07
DEC 2000	-0.25	-0.26	2	16	10	0.01
MAR 2001	-0.21	-0.24	0	21	0	0.03
JUN 2001	-0.16	-	-	-	-	-
SEP 2001	-0.16	-	-	-	-	-
DEC 2001	0.09	-	-	-	-	-

Actual EPS is "as reported" and may reflect one-time charges

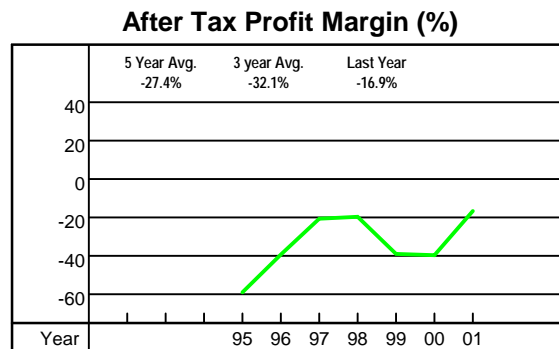
**Revenues (Millions \$)**

Year	Q1	Q2	Q3	Q4	Total
2001	700.356	667.625	639.281	1115.171	3122.433
2000	573.889	577.876	637.858	972.360	2761.983
1999	293.642	314.377	355.777	676.043	1639.839
1998	87.361	115.982	153.648	252.828	609.819
1997	16.005	27.855	37.887	66.040	147.787
1996	0.875	2.230	4.173	8.468	15.746
1995	-	-	-	-	0.511
1994	-	-	-	-	0.000



**After Tax Profit Margin (%)**

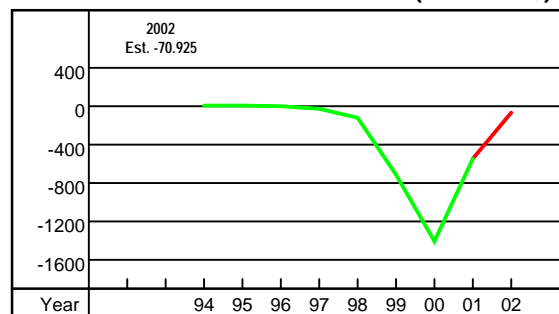
Year	Q1	Q2	Q3	Q4	Total
2001	-30.05	-23.67	-25.79	0.62	-16.86
2000	-38.36	-35.77	-27.00	-52.20	-40.07
1999	-19.67	-40.85	-48.83	-41.91	-39.22
1998	-11.87	-19.47	-29.40	-17.21	-19.95
1997	-18.98	-27.02	-25.46	-16.37	-20.99
1996	-37.83	-34.40	-57.03	-27.15	-39.67
1995	-	-	-	-	-59.30
1994	-	-	-	-	-



**Net Income Available to Common (Millions \$)**

Year	Q1	Q2	Q3	Q4	Total
2001	-223.608	-168.359	-169.874	5.087	-556.754
2000	-308.425	-317.184	-240.524	-545.140	-1411.273
1999	-61.668	-138.008	-197.080	-323.212	-719.968
1998	-10.369	-22.579	-45.171	-46.427	-124.546
1997	-3.038	-7.527	-9.647	-10.808	-31.020
1996	-0.331	-0.767	-2.380	-2.299	-6.246
1995	-	-	-	-	-0.303
1994	-	-	-	-	-0.052

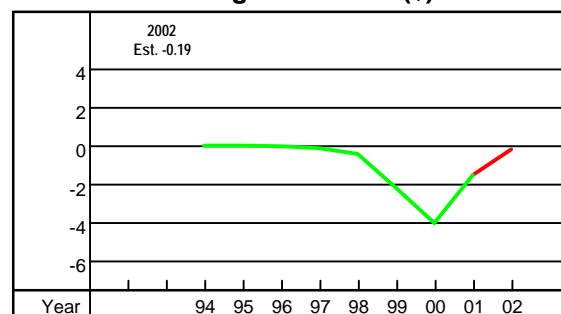
**Net Income Avail. to Common (Millions \$)**



**Earnings Per Share (\$)**

Year	Q1	Q2	Q3	Q4	Total
2001	-0.63	-0.47	-0.46	0.01	-1.53
2000	-0.90	-0.91	-0.68	-1.53	-4.02
1999	-0.20	-0.43	-0.59	-0.96	-2.20
1998	-0.04	-0.08	-0.15	-0.15	-0.42
1997	-0.01	-0.03	-0.04	-0.04	-0.12
1996	0.00	0.00	-0.01	-0.01	-0.03
1995	-	-	-	-	0.00
1994	-	-	-	-	0.00

**Earnings Per Share (\$)**



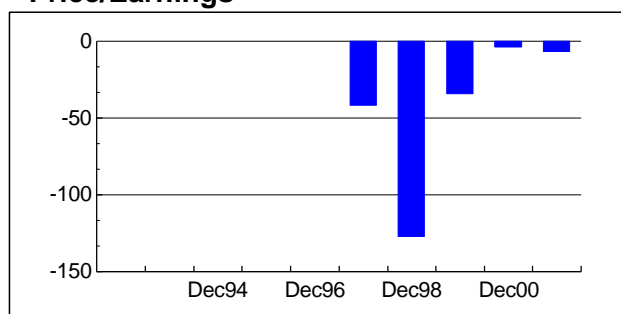
Income Statement Analysis

	LTM		Dec00	Dec99	Dec98	Dec97	Dec96	Dec95	Dec94
	Dec01	Dec01							
Sales	3122.433	3122.433	2761.983	1639.839	609.819	147.787	15.746	0.511	0.000
Operating Inc., Bef. Depr	-226.587	-277.686	-541.062	-329.474	-54.649	-27.799	-6.147	-0.285	-0.047
Depreciation	134.571	134.571	322.818	276.281	54.406	4.796	0.296	0.019	0.005
Interest Expense	-139.232	-139.232	-130.921	-84.566	-26.639	-0.326	-0.005	0.000	0.000
Pretax Income	-526.427	-526.427	-1106.677	-643.199	-121.641	-31.020	-6.246	-0.303	-0.052
Net Income	-556.754	-556.754	-1411.273	-719.968	-124.546	-31.020	-6.246	-0.303	-0.052
Earnings Per Share-Excl	-1.54	-1.53	-4.02	-2.20	-0.42	-0.12	-0.03	0.00	0.00

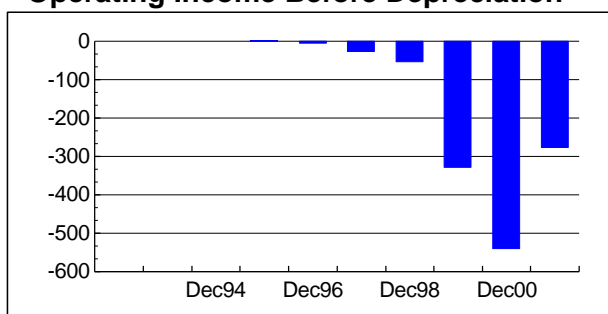
Ratio Analysis

	LTM		Dec00	Dec99	Dec98	Dec97	Dec96	Dec95	Dec94
	Dec01	Dec01							
Price/Earnings	-	-7.08	-3.87	-34.56	-127.48	-42.19	-	-	-
Gross Margin (%)	25.58	25.58	23.74	17.72	21.92	19.50	21.97	19.96	-
Operating Margin (%)	-13.20	-16.86	-40.07	-39.22	-19.95	-20.99	-39.67	-59.30	-
Net Margin (%)	-16.86	-16.86	-40.07	-39.22	-19.95	-20.99	-39.67	-59.30	-
Return On Equity (%)	-	46.26	-	-355.52	-148.86	-193.96	-285.73	-	-
Return On Assets (%)	-33.17	-29.52	-61.35	-46.24	-31.20	-39.24	-133.53	-	-
Return On Investments (%)	-63.32	-13.82	-34.44	-29.22	-20.37	-26.42	-133.53	-	-

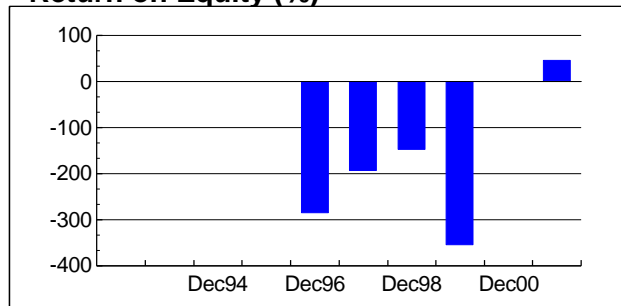
Price/Earnings



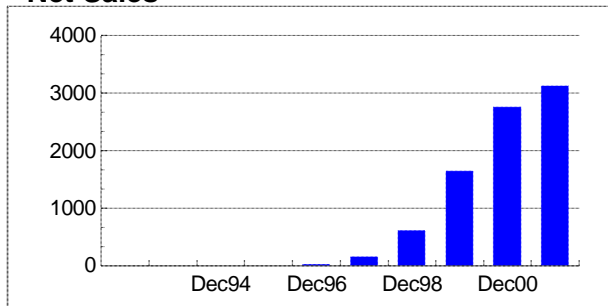
Operating Income Before Depreciation



Return on Equity (%)



Net Sales



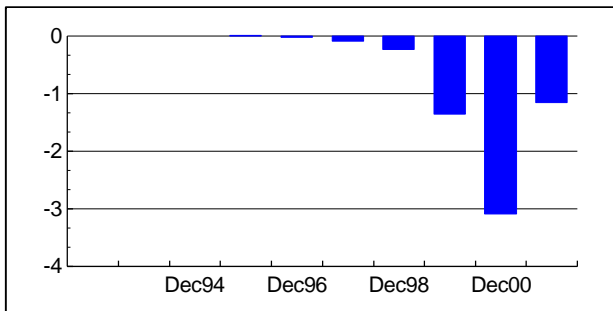
**Cash Flow Analysis**

OPERATING ACTIVITIES	Dec01	Dec00	Dec99	Dec98	Dec97	Dec96	Dec95	Dec94
Income Before Extraordinary Items	-567.277	-1411.273	-719.968	-124.546	-31.020	-6.246	-0.303	-0.052
Depreciation and Amortization	134.571	322.818	276.281	54.406	4.796	0.296	0.019	0.005
Cash Flow	-432.706	-1088.455	-443.687	-70.140	-26.224	-5.950	-0.284	-0.047
Other Non-Cash Items	141.578	672.032	122.700	28.707	0.064	0.000	0.000	0.000
Working Capital Changes - DEC (Inc)	171.346	285.981	230.112	72.468	26.847	3.940	0.052	0.023
Cash Flow From Operating Activities	-119.782	-130.442	-90.875	31.035	0.687	-2.010	-0.232	-0.024
Capital Expenditures	-50.321	-134.758	-287.055	-28.333	-7.603	-1.335	-0.052	-0.028
Cash Dividends	0.000	0.000	0.000	0.000	0.000	0.000	0.000	0.000
Free Cash Flow	-170.103	-265.200	-377.930	2.702	-6.916	-3.345	-0.284	-0.052

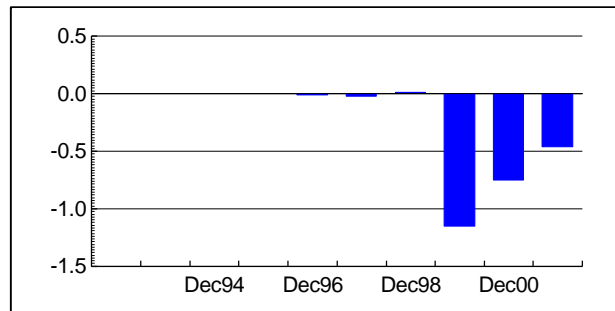
**Ratio Analysis**

	Dec01	Dec00	Dec99	Dec98	Dec97	Dec96	Dec95	Dec94
Cash Flow Per Share	-1.16	-3.10	-1.36	-0.24	-0.10	-0.03	0.00	0.00
Free Cash Flow Per Share	-0.47	-0.76	-1.16	0.01	-0.03	-0.02	0.00	0.00
Cash Flow Margin	-13.86	-39.41	-27.06	-11.50	-17.74	-37.79	-55.58	-
Price/Cash Flow	-9.34	-5.02	-56.06	-225.92	-49.71	-	-	-
Closing Price	10.82	15.56	76.13	53.54	5.02	-	-	-

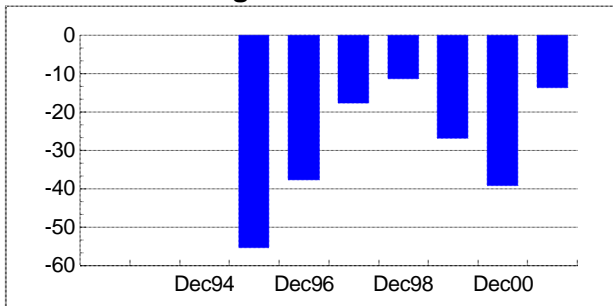
**Cash Flow Per Share**



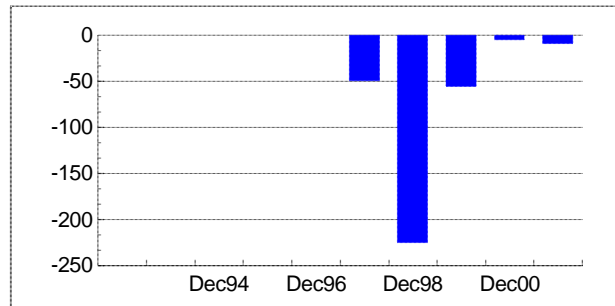
**Free Cash Flow Per Share**



**Cash Flow Margin**



**Price/Cash Flow**



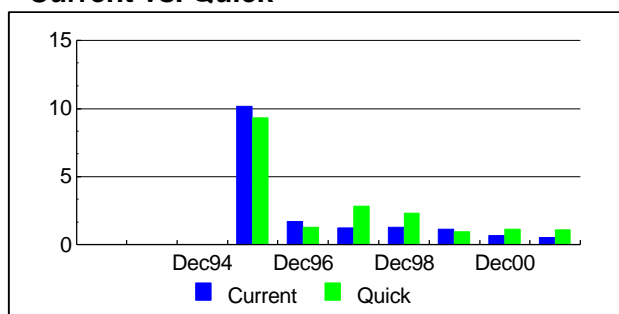
**Balance Sheet Analysis**

	Dec01	Dec00	Dec99	Dec98	Dec97	Dec96	Dec95	Dec94
Assets-Total	1637.547	2135.169	2465.850	648.460	149.844	8.271	1.084	-
Cash and Equivalents	540.282	822.435	133.309	25.561	1.876	6.248	0.996	-
Common-Equity Total	-1440.000	-967.251	266.278	138.745	28.591	3.395	0.977	-
LT Debt-Total	2156.133	2127.464	1466.338	348.140	76.702	0.000	0.000	-
Liabilities-Total	3077.547	3102.420	2199.572	509.715	121.253	4.870	0.107	-
Stockholders' Equity	-1440.000	-967.251	266.278	138.745	28.591	3.401	0.977	-
Common Shares Out	373.218	357.140	345.155	318.534	289.818	190.803	174.663	-
Market Capitalization	4038.219	5558.170	26274.924	17054.947	1455.176	-	-	-

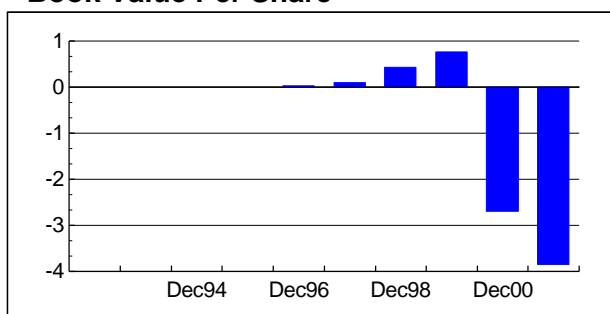
**Ratio Analysis**

	Dec01	Dec00	Dec99	Dec98	Dec97	Dec96	Dec95	Dec94
Book Value/Share	-3.86	-2.71	0.77	0.44	0.10	0.02	0.01	-
Current Ratio (%)	0.53	0.69	1.12	1.27	1.24	1.70	10.13	-
Quick Ratio (%)	1.08	1.13	0.96	2.31	2.81	1.28	9.31	-
Debt To Equity (%)	-1.50	-2.20	5.51	2.51	2.68	0.00	0.00	-

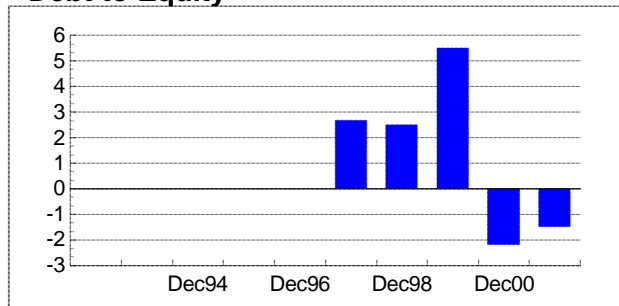
**Current vs. Quick**



**Book Value Per Share**



**Debt to Equity**



**Market Capitalization (Millions)**

